
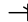


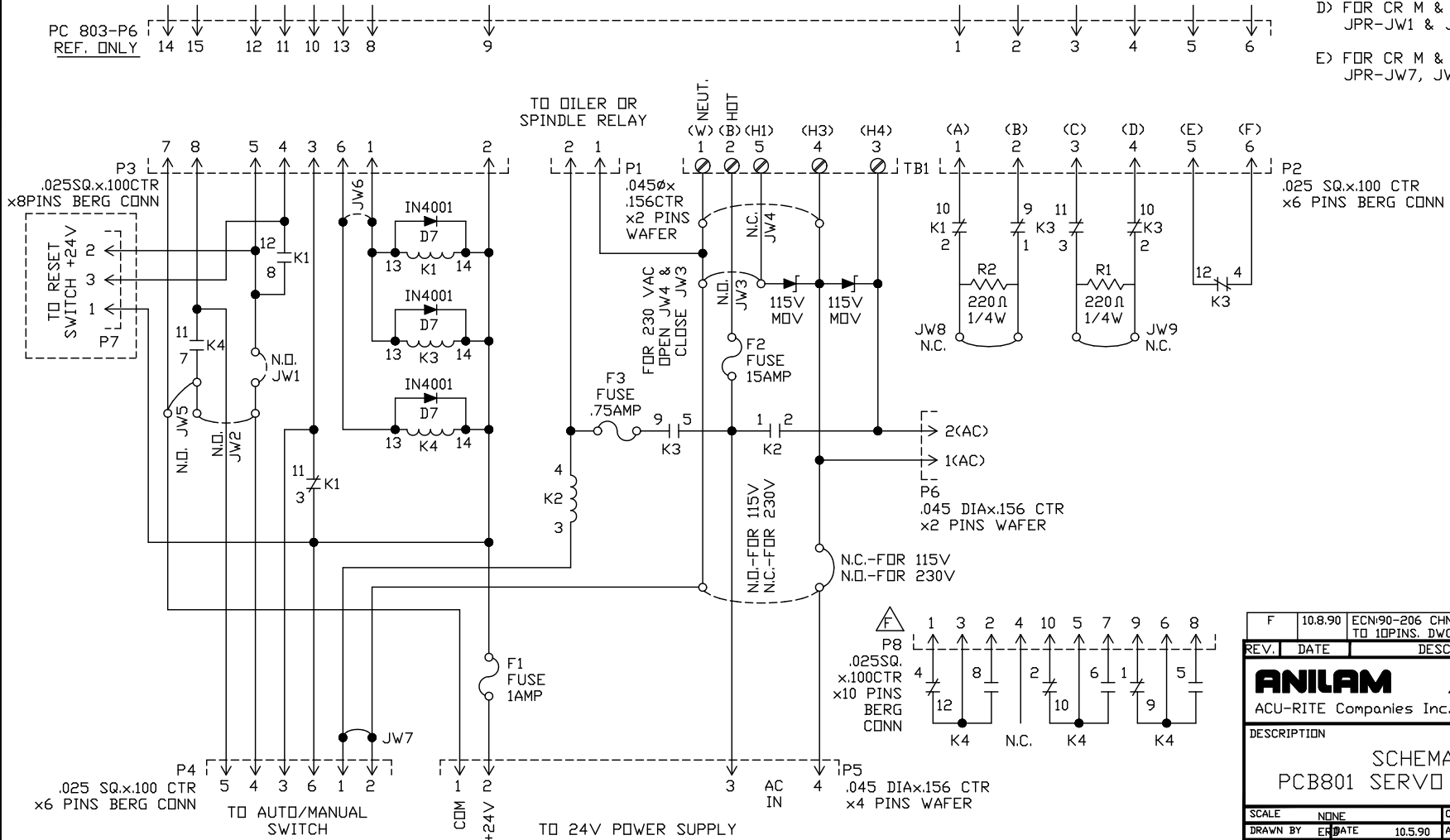
GENERAL NOTES

- 1) STANDARDIZATION:
- A) FOR CR II SERVO AMP MILL PACKAGES-DEM STYLE: JPR-JW1
- B) FOR CR II OLD STANDARD STYLE MILL PACKAGES: JPR-JW2 & JW5
- C) FOR CR II LATHE STYLE: JPR-JW6, JW7, JW8 & JW9
- D) FOR CR M & G MILL STYLE: JPR-JW1 & JW2
- E) FOR CR M & G LATHE STYLE: JPR-JW7, JW8 & JW9

RELAY:  N.O.
 N.C.

K2: SOLID STATE RELAY
 120/240 VAC COIL

K1, K3, K4: SOCKET MOUNT 24 VDC COIL



F	10.8.90	ECN-90-206 CHNGD P8 FROM 9PINS TO 10PINS. DWG WAS REDRAWN	ERD
REV.	DATE	DESCRIPTION	BY
ANILAM ACU-RITE			
ACU-RITE Companies Inc. - Miramar, FL U.S.A.			
DESCRIPTION			
SCHEMATIC, PCB801 SERVO CIRCUIT BD.			
SCALE	NONE	CHECK BY	DATE
DRAWN BY	ERD	APP'D BY	DATE
DRAWING NO.	90100175	SHT 1 OF 1	REV. F

All rights reserved. Subject to change without notice.